

# VENUE GUIDE: GUERNSEY

ST PETER'S PORT

JULY

# EXPECTED WIND CONDITIONS

St Peter's Port:

NE-SE ~ 42%

SE-W ~ 12%

W-NNW ~ 26%

NNW-NE ~ 18%

Guernsey Airport

NNW-NE ~ 7%

NE-ESE ~ 8%

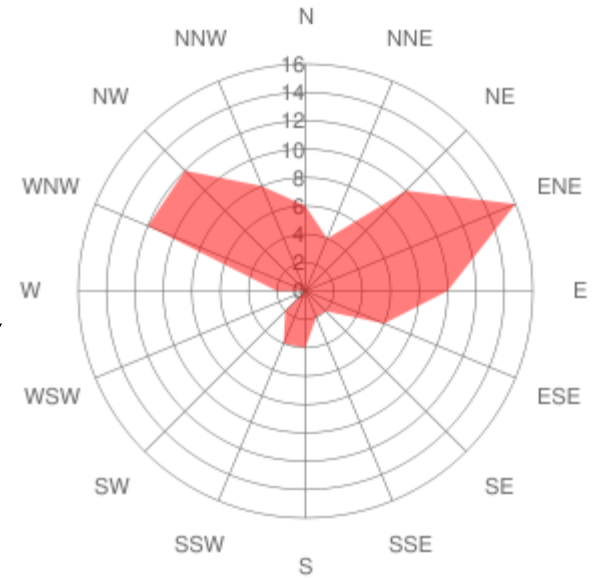
ESE-SSW ~ 12%

SSW-NNW ~ 62%



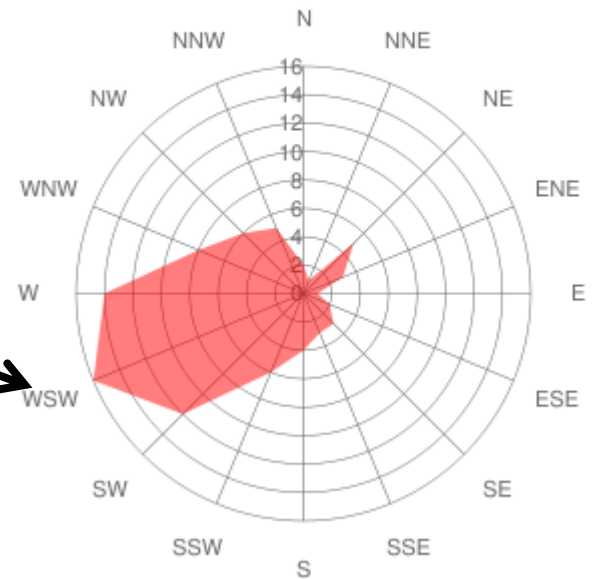
Wind dir. distribution St Peter Port June

© windfinder.com

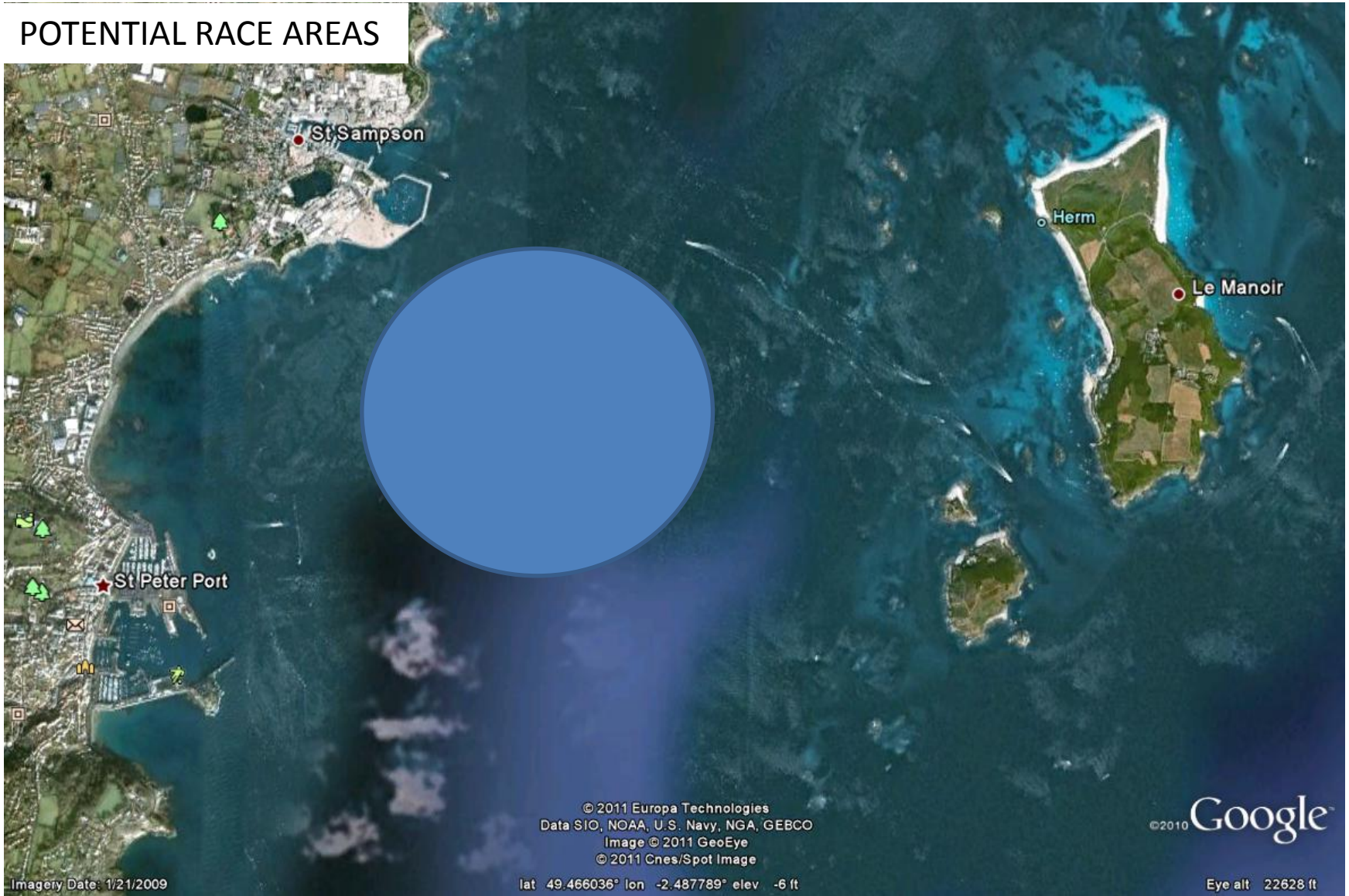


Wind dir. distribution Guernsey Airport July

© windfinder.com

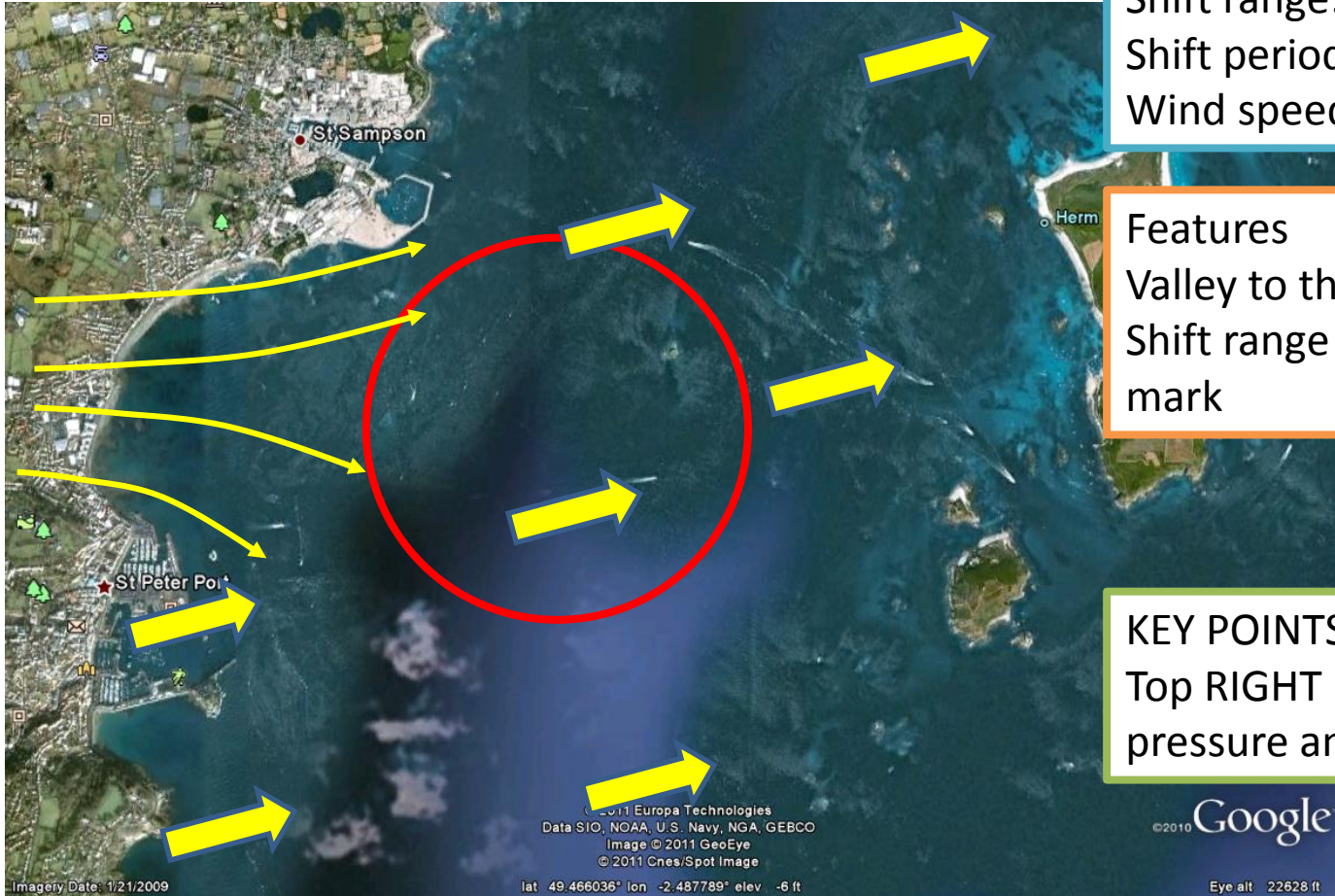


# POTENTIAL RACE AREAS



# SE-W ~ 12%

TRANSITION PERIOD AS LOW PRESSURE TRACKS TO EAST TO THE NORTH OF THE AREA



Shift range: 20-40 deg  
Shift period: 01-03 mins  
Wind speed range: 04-07 KT

Features  
Valley to the north of harbour  
Shift range increasing to wwd mark

KEY POINTS  
Top RIGHT likely to be strong for pressure and shift